



ScreenMate

Web Interface for Zone Environment Control

TAC Vista ScreenMate is a web application to TAC Vista. It allows users who are not familiar with the building automation system, to interact with and control parts of the system using a standard web browser.

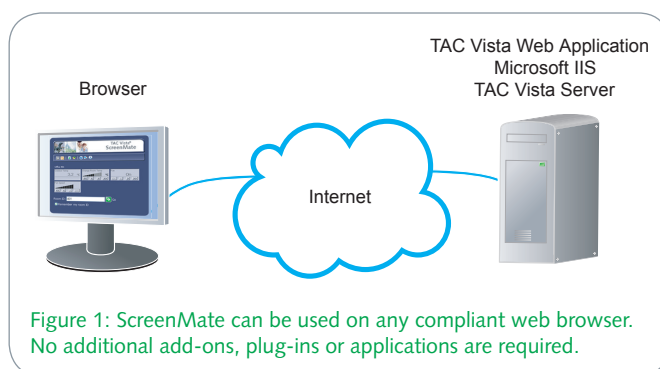
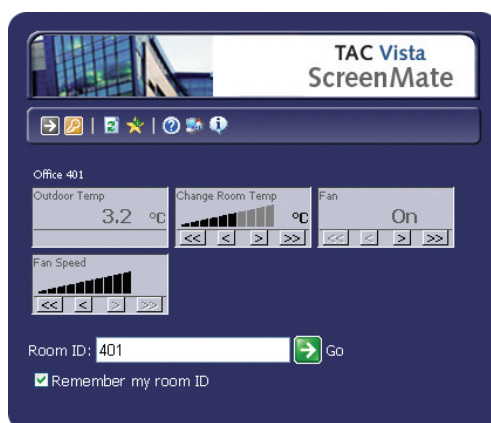
ScreenMate is designed to replace a traditional room unit. For example, you can use a web browser to change the office room temperature set point, view the current room temperature, humidity or air quality, check the outside temperature, adjust lighting or see if a conference room is busy.

ScreenMate is typically used by office staff, but it can also be accessed from any location that is equipped with a standard web browser. The information is presented in a clear and easy-to-understand manner.

The information is presented in the web browser on the user's computer. Apart from an operating system and a web browser, the ScreenMate client computer requires no additional add-ons, plug-ins or applications. ScreenMate uses standard HTTP or HTTPS communication and can be used on Intranets as well as the Internet. Providing normal web (HTML/HTTP/HTTPS) traffic is allowed, no special proxy configuration is required.

The ScreenMate web application must be installed on a server running Microsoft Internet Information Services (IIS) and TAC Vista Server. ScreenMate presents information from TAC Vista Server using standard web browsing technology.

ScreenMate is easy to install and requires minimal maintenance. As all engineering and administration work are performed on the TAC Vista Server, maintenance and reconfiguration are easy and cost effective.



CONFIGURATION

ScreenMate is a web application. It is installed on a web server using the TAC Vista Web Applications install program. TAC Vista should run on the same computer.

ScreenMate is easy to customize using the integrated TAC Vista Web Settings. You can change the colors and appearance of the user interface.

User accounts, user authority and TAC Vista ScreenMate objects are administered using TAC Vista Workstation.

LICENSING

Each concurrently logged in user requires a ScreenMate Client Access License (CAL). ScreenMate CALs are available in packages of 10, 20 and 100 CALs. The packages are listed in the Part Number table below.

Example: If a customer is expected to need 30 concurrent users, the customer would need the packages for 10 + 20 = 30 CALs, that is, the 000882801 and the 000882811 packages. A 31st user trying to log in will not succeed and will get a message accordingly.

WEB SECURITY AND COMMUNICATION

ScreenMate can be configured to use HTTPS. HTTPS requires a server certificate, this can be created or bought from certification authorities such as Verisign, RSA or their agents. ScreenMate is not supplied with a default certificate.

If you wish to make your own certificate Schneider Electric recommends that you download SelfSSL from Microsoft.

For security reasons a certificate must be renewed on a regular basis, usually once every year. If you create your own certificate, you can specify the expiration terms yourself.

ScreenMate use cookies for various functions. A full description of the use of cookies is included with the product.

Both Vista accounts and NT accounts can be used with TAC Vista ScreenMate.

FUNCTIONS

You can set for example lighting and temperature preferences using a web browser in any computer. By entering a room ID, ScreenMate allows you to view and monitor its environment.

The points and objects that a user wishes to view or control using ScreenMate are defined by the commissioner using TAC Vista Workstation.

There are two kinds of ScreenMate objects, Standard ScreenMate object and ScreenMate object. This allows the commissioner to create groups of ScreenMate users with the same settings, or create individual solutions for each user.

ScreenMate can be viewed on any computer using a standard web browser.

TECHNICAL DATA

Server Requirements

32-bit version of:

..... Microsoft® Windows 7 Professional/Ultimate*
... Microsoft® Windows Vista Business/Enterprise/Ultimate*
... Microsoft® Windows XP Professional (Service Pack 2-3)*
..... Microsoft® Windows Server 2008 Standard/Enterprise
..... Microsoft® Windows Server 2003 R2 SP2

*) Supported in test environments, but should not be used in customer installations without considering client connection limitations.

Web server Microsoft Internet Information Server 6 or 7**

** IIS 7 must have IIS6 compatibility mode turned on

CPU Intel Pentium 4 2.0 GHz

Recommended Intel Pentium 4 3.0 GHz

Primary memory (minimum) 1 GB

Required hard disk space after installation >300 MB

Other TAC Vista Server 5.1 or later

See requirements for TAC Vista Server in the TAC Vista Server datasheet.

Network Requirements

Network protocol TCP/IP

Client Requirements

Web browser HTML version 4.01

JavaScript enabled.

Cookies enabled (client-side information storage possible).

Pop-ups enabled.

Supported browsers Internet Explorer 6.0 (SP2) / 7.0

..... Firefox 2

Part Numbers

10 Client Access Licenses 000882801

10 Client Access Licenses – Upgrade* 000883801

10 Client Access Licenses – 1 year subscription 000884800

20 Client Access Licenses 000882811

20 Client Access Licenses – Upgrade* 000883811

20 Client Access Licenses – 1 year subscription 000884810

100 Client Access Licenses 000882821

100 Client Access Licenses – Upgrade* 000883821

100 Client Access Licenses – 1 year subscription 000884820

* Upgrade to ScreenMate 5.1 (Vista 5.1) from earlier versions of ScreenMate.

