



Webstation

Web Interface for Operators

TAC Vista Webstation is a web application to TAC Vista. It allows users to operate parts of a TAC Vista system using a standard web browser.

For example, caretakers or service personnel can use a web browser to view graphics and trend charts, change set points and time schedules, and adjust plant parameters. Operations managers can monitor building performances in several buildings from any computer.

The information is presented in the web browser on the user's computer. Webstation uses standard HTTP or HTTPS communication and can be used on Intranets as well as the Internet. Providing normal web (HTML/HTTP/HTTPS) traffic is allowed, no special proxy configuration is required.

The Webstation web application must be installed on a server running Microsoft Internet Information Services (IIS) and TAC Vista Server. Webstation presents information from TAC Vista Server using standard web browsing technology.

Webstation is easy to install and requires minimal maintenance. As all engineering and administration work are performed on the TAC Vista Server, maintenance and configuration are easy and cost effective.

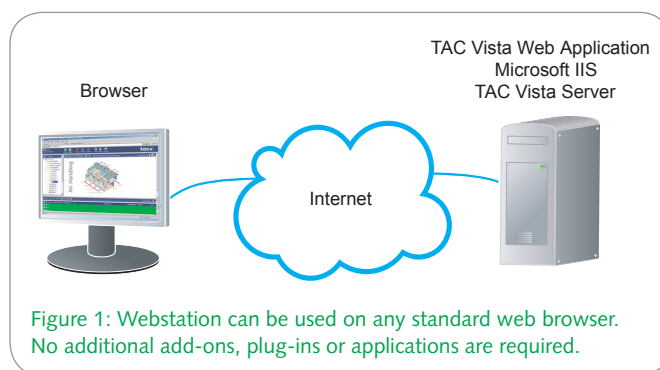
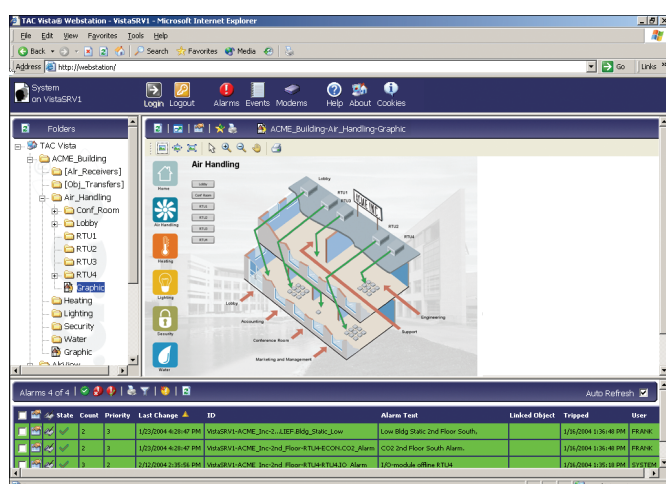


Figure 1: Webstation can be used on any standard web browser. No additional add-ons, plug-ins or applications are required.

FUNCTIONS

Webstation includes functions for navigation and viewing graphics, trend charts, alarms and events.

Navigation

Navigating through the various parts of your TAC Vista installation is easy and uses an interface similar to Microsoft Windows Explorer.

Graphics

Webstation displays graphics created in the TAC Vista Graphics Editor.

Once created you can:

- display values
- display fan and pump status

- display alarm status
- start and stop equipment
- change values
- navigate to other graphics or trend charts by clicking on link areas

Time Schedules

Weekly charts and alternative charts can be edited.

Alarms

Alarms are easily managed using the alarm list. The alarm list allows you to acknowledge alarms, view disabled alarms, and filter alarms. You can also open related graphics or trend charts by clicking on the alarm.

Reports, Diagrams

Webstation can display static reports and diagrams that have been created in TAC Vista Workstation.

Viewing Other File Formats

Webstation can be used to gain a direct access to document files, such as user guides or functional descriptions. The associated application to the document file must be installed.

The Event Log

The Vista event log can be displayed in Webstation as a simple event list or in greater detail. The following events are logged in Vista: alarms, object changes, commands, and trend log edits.

CONFIGURATION

Webstation is a web application. It is installed on a web server using the TAC Vista Web Applications install program. TAC Vista should run on the same computer.

Webstation is easy to customize using the integrated TAC Vista Web Settings. You can change the colors and appearance of the user interface and a number of other settings.

Access rights for web users are the same as for other users in the TAC Vista system, and is administered using TAC Vista Workstation.

LICENSING

Each concurrently logged in user requires a Webstation Client Access License (CAL). Webstation CALs are available in packages of 1, 3, 6 and 12 CALs. A high-end package is also available that allows an unlimited number of concurrent users. The packages are listed in the Part Number table below.

Example: If a customer is expected to need 4 concurrent users, the customer would need the packages for 1 + 3 = 4 CALs, that is, the 000882701 and the 000882711 packages. A fifth user trying to log in will not succeed and will get a message accordingly.

WEB SECURITY AND COMMUNICATION

Webstation can be configured to use HTTPS. HTTPS requires a server certificate, this can be created or bought from certification authorities such as Verisign, RSA or their agents. Webstation is not supplied with a default certificate.

If you wish to make your own certificate TAC recommends that you download SelfSSL from Microsoft.

For security reasons a certificate must be renewed on a regular basis, usually once every year. If you create your own certificate, you can specify the expiration terms yourself.

Webstation use cookies for various functions. A full description of the use of cookies is included with the product.

Both Vista accounts and NT accounts can be used with TAC Vista Webstation.

TECHNICAL DATA

Server Requirements

32-bit version of:

- Microsoft® Windows 7 Professional/Ultimate*
- ... Microsoft® Windows Vista Business/Enterprise/Ultimate*
- ... Microsoft® Windows XP Professional (Service Pack 2-3)*
- Microsoft® Windows Server 2008 Standard/Enterprise
- Microsoft® Windows Server 2003 R2 SP2

*) Supported in test environments, but should not be used in customer installations without considering client connection limitations.

Web server Microsoft Internet Information Server 6 or 7**

** IIS 7 must have I!6 compatibility mode turned on

CPU Intel Pentium 4 2.0 GHz

Recommended Intel Pentium 4 3.0 GHz

Primary memory (minimum) 1 GB

Required hard disk space after installation >300 MB

Other TAC Vista Server 5.1 or later

See requirements for TAC Vista Server in the TAC Vista Server datasheet.

Network Requirements

Network protocol TCP/IP

Client Requirements

Web browser HTML version 4.01

JavaScript enabled.

Cookies enabled (client-side information storage possible).

Pop-ups enabled.

Supported browsers Internet Explorer 6.0 (SP2) / 7.0

..... Firefox 3

Java (to be able to view dynamic TGML graphics) 1.6

External programs (to be able to view reports) Microsoft Excel 2003/2007/XP

Part Numbers

1 Client Access Licenses 000882701

1 Client Access Licenses – Upgrade* 000883701

1 Client Access Licenses – 1 year subscription 000884700

3 Client Access Licenses 000882711

3 Client Access Licenses – Upgrade* 000883711

3 Client Access Licenses – 1 year subscription 000884710

6 Client Access Licenses 000882721

6 Client Access Licenses – Upgrade* 000883721

6 Client Access Licenses – 1 year subscription 000884720

12 Client Access Licenses 000882731

12 Client Access Licenses – Upgrade* 000883731

12 Client Access Licenses – 1 year subscription 000884730

Unlimited 000882741

Unlimited – Upgrade* 000883741

Unlimited – 1 year subscription 000884740

* Upgrade to Webstation 5.1 (Vista 5.1) from earlier versions of Webstation.

Copyright © 2008-2010, Schneider Electric
All brand names, trademarks and registered trademarks are the property of their respective owners. Information contained within this document is subject to change without notice. All rights reserved.

03-00024-06-en

Mar 2010

For more information visit

www.schneider-electric.com/buildings

